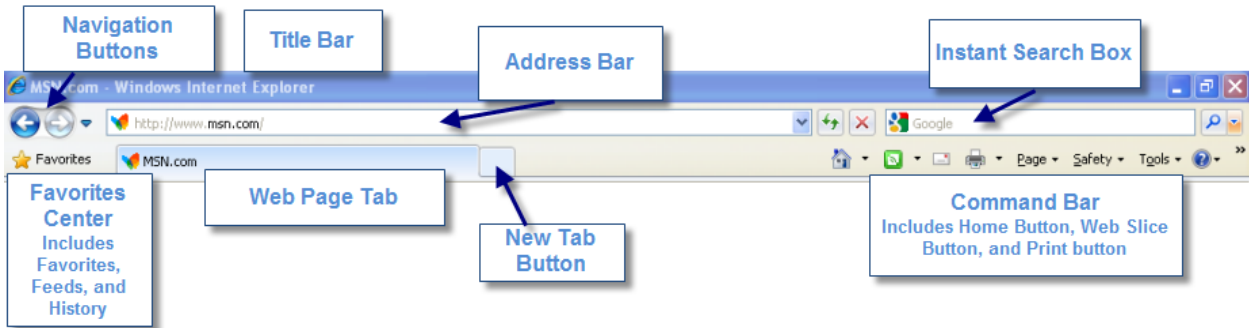




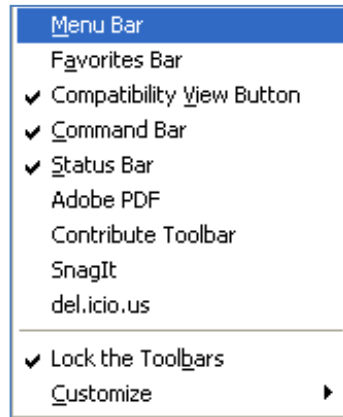
Internet Explorer 8



User Preferences

To turn on the Menu Bar

1. Right-Click near the Command Bar
2. Click on *Menu Bar*



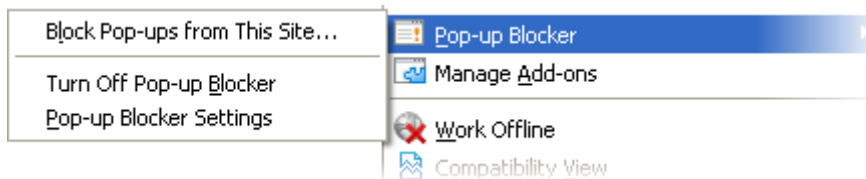
To Turn off the Phishing Filter

1. Click on **Safety** button
2. Choose **SmartScreen Filter**
3. Click *Turn Off Automatic Website Checking*



To Turn off/on Pop-up Blocker

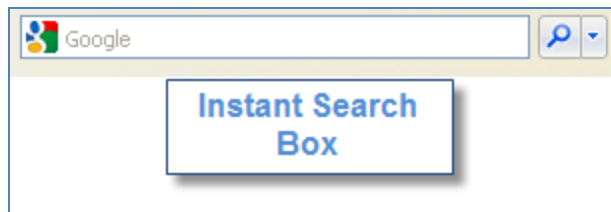
1. In the Command Bar click on **Tools** Button
2. Click **Pop-up Blocker**
3. Click *Turn Off/On Pop-up Blocker*



Internet Explorer 8

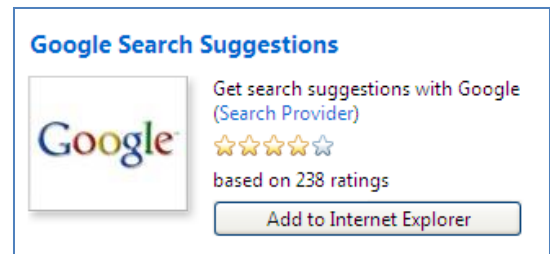
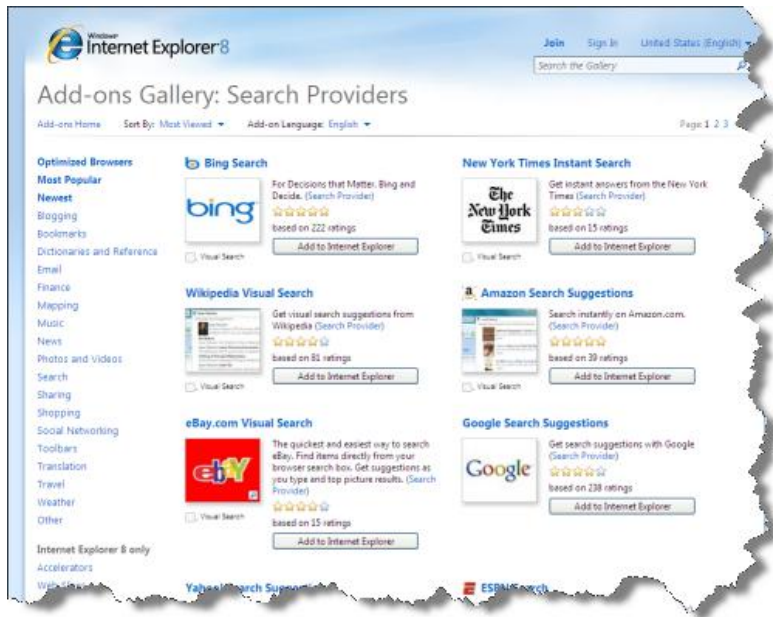
Instant Search Box

You will be prompted to keep all of your default settings including your default Search Provider the first time you log in after IE 8 is installed. You can change or add a Search Provider at anytime.

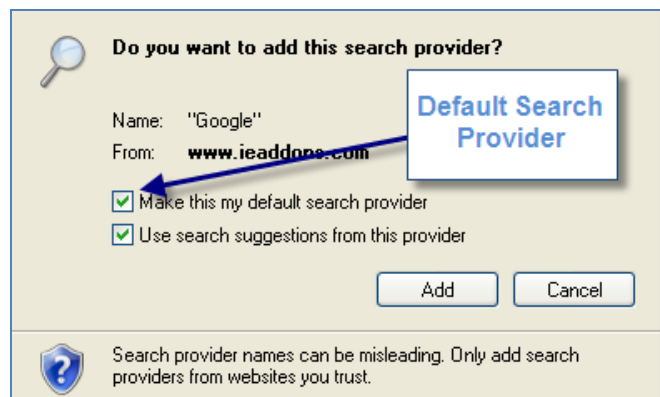


To Add or Change the Search Provider

1. Click on the arrow to the right of the **Search Options** Button
2. Click on *Find More Providers*



3. Choose the provider you want
 4. The **Add Search Provider** dialog box will appear
 5. Click **Add**
- (**Hint:** You may make this provider your default by checking **Make this my default search provider**)



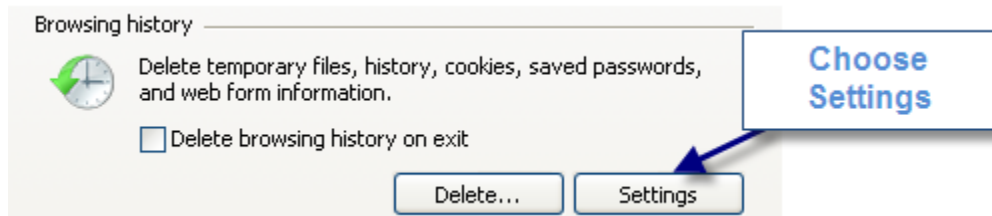
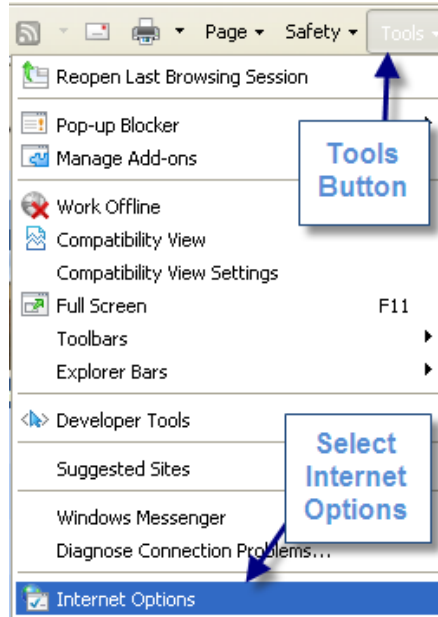


Internet Explorer 8

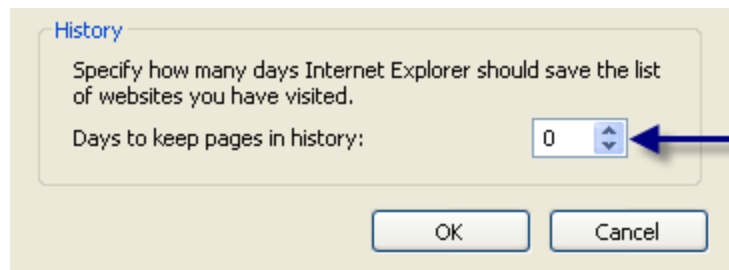
Browsing History

To configure your Browsing History

1. Click the **Tools Button**
2. Select **Internet Options**



3. Click on **Browsing History Settings Button**
4. Change days to any number of days you would like kept in your **History Folder**.



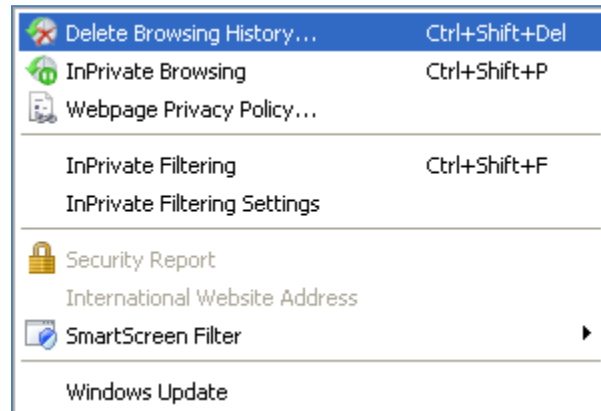
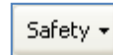
If you choose **0**, no **Browsing History** will be kept when you close the IE8 session.



Internet Explorer 8

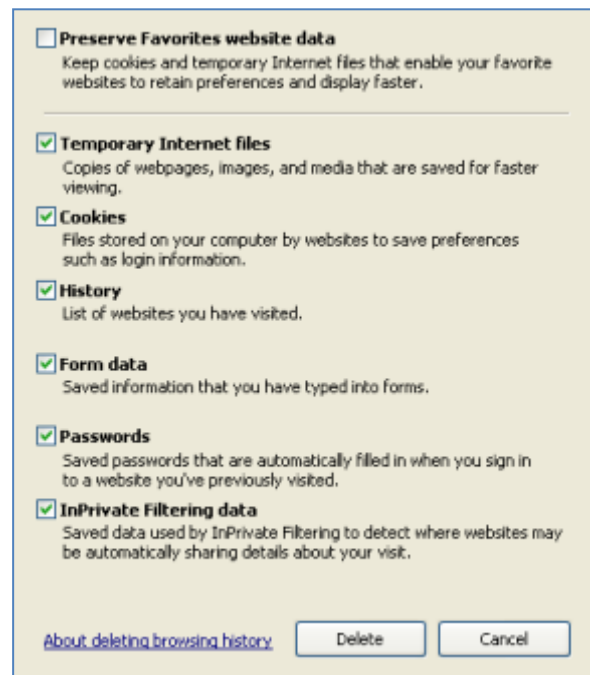
To clear the entire browsing history

1. Click on **Safety Button** in the **Command Bar**
2. Click *Delete Browsing History*
3. Check all categories, and click



To delete a specific category of browsing history

1. Click on **Safety Button** in the **Command Bar**
2. Click *Delete Browsing History*.
3. Check **ONLY** the specific categories you would like to remove
4. Click *Delete*



Internet Explorer 8

Tabbed Browsing

Tabbed browsing allows you to open multiple web browsing sessions (web sites) at once. You no longer need to open separate browser windows to view several web sites.

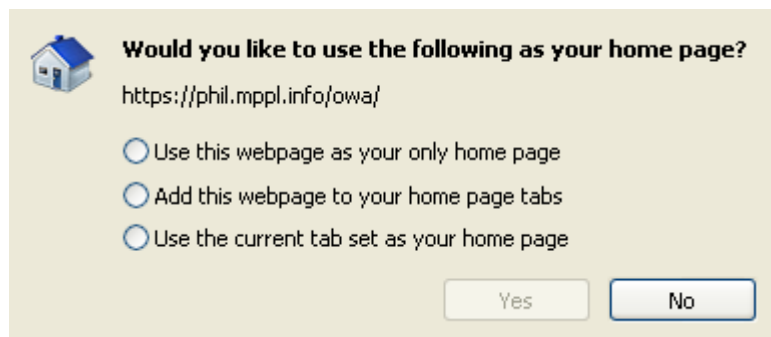
To Create a Home Tab

1. Go the web page you want to use as your home page
2. Click the down arrow to the right of the **Home** button
3. Click *Add or Change home page*
4. Click *Add this web page to your Home Page tabs*
5. Click **Yes** to save your changes




Suggested Home tabs:


www.yahoo.com
www.google.com
www.mpppl.org
www.cnn.com



To add subsequent Home Tabs

1. Click **New Tab** button 
2. Follow previous steps 1 – 5

To open a new tab

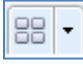
1. Click on the **New Tab Button** 
2. You may now type the address of the web site to which you wish to browse in the Address Bar

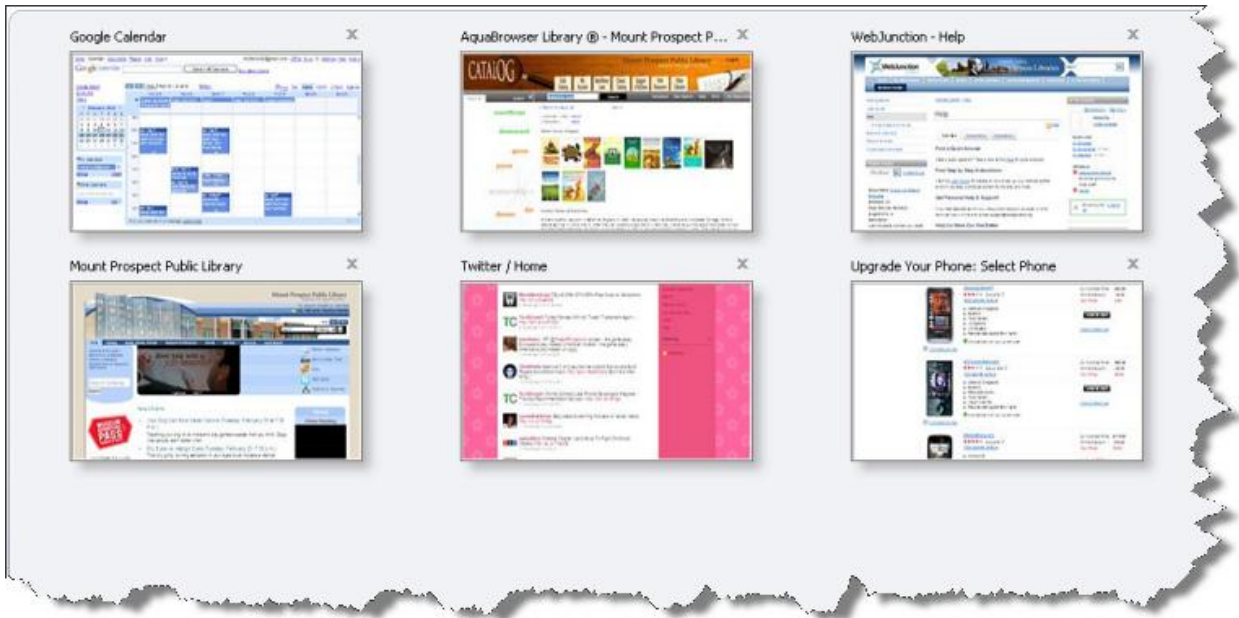


3. Press **Enter**

Internet Explorer 8

To view all of your tabbed pages at once

1. Click on the **Quick Tab** button 
2. All of your home pages will come up in a thumbnail preview



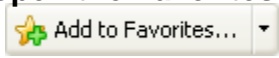
Notes:

Internet Explorer 8

Favorites Center

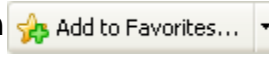
In IE8 the **Favorites Center**  holds all of your Favorites, RSS feeds, and Browsing History. All of your Favorites from IE7 will import automatically when you start IE8 the first time.

To add a Favorite


1. Go to web site you want to set as a Favorite
 2. Click on the **Favorites Button to open the Favorites Center**
 3. Click on **Add to Favorites Button** 
 4. Click **Add**
 5. Your new favorite will now be in the Favorite Center (Be sure to click the Favorites Tab to see the list)
- (**Hint:** You can change the name of the favorite and organize them in folders the same way as it was in IE7)

To add a Tab Group to Favorites

You can add a Tab Group to Favorites when you have multiple tabbed windows open.

1. Click on the **Favorites Button to open the Favorites Center**
2. Click on the arrow on the **Add to Favorites Button** 
3. Click on **Add Current Tabs to Favorites**
4. Type in a name in the **Folder Name** box
5. Click **Add**

To add an RSS Feed

1. Go to the web site that has an RSS feed you would like to add
 2. Click on the **RSS feed Button** in the **Command Bar** 
- (**Hint:** It will be **orange** when there are RSS feeds available on the site)
3. From the drop down list, choose to which feed you would like to subscribe
 4. Click on the *Subscribe to this feed* link
 5. Click the **Subscribe Button** on the dialog box